

Installation Guide DCP Limit Tool

Florian Dorgerloh
06.11.2024
Leipzig

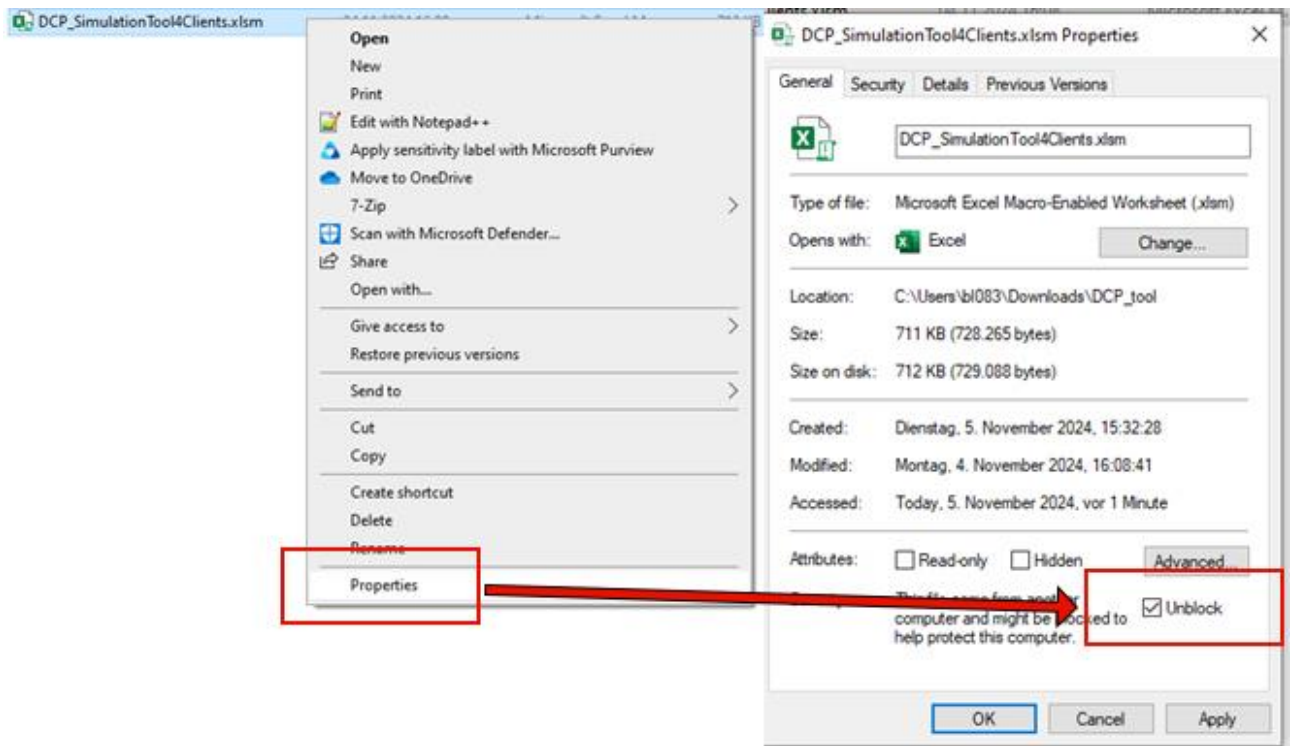
1. Download the tool from ECC's website at www.ecc.de > Access > DCP Members > DCP Risk Management and save it to a local directory.

Please note that the tool is optimised for Windows systems.

2. Enable the macros in the Excel tool. This can be done in two ways.

- o **Method 1:**

Right-click the file, select "Properties," and under the "Security" tab, allow the macros.



- **Method 2:**
Open the Excel file, go to *Data > Options > Trust Center > Trust Center Settings > Macro Settings*, and enable VBA macros.

